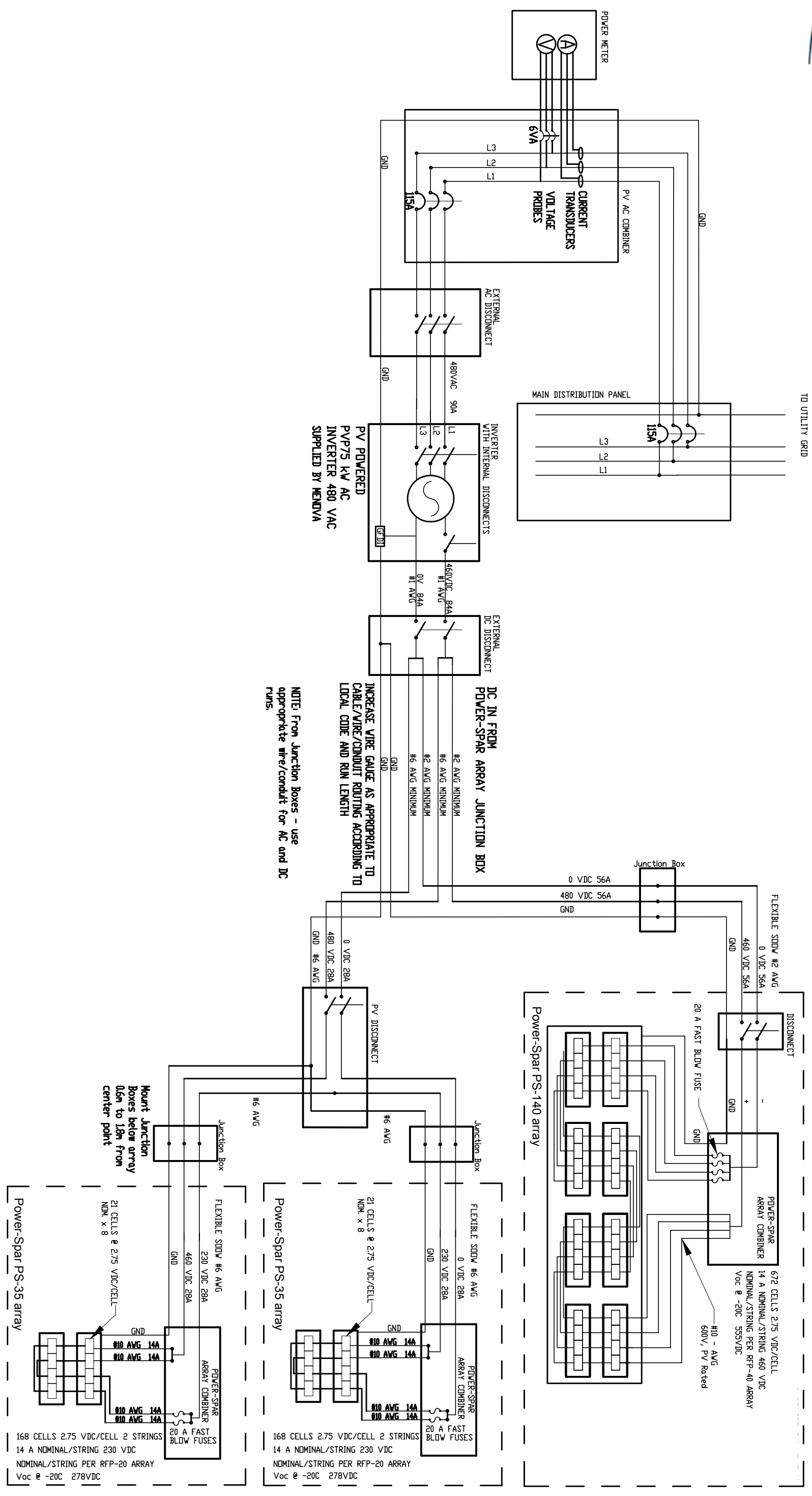


REVISION HISTORY					
REV	DATE	CHANGE DESCRIPTION	PREP BY	CHK	APPV
A	10NOV2008	INITIAL RELEASE	RHS	RH	BJG
B	17NOV2008	CHANGE NUMBER TO 21 W	RHS	RH	BJG
C	25NOV2008	CHANGE ARRAY TO POWER SPAR AND RE INTERMEDIATE	GH	GH	—



DC IN FROM POWER-SPAR ARRAY JUNCTION BOX

#2 AWG MINIMUM
#6 AWG MINIMUM
#2 AWG MINIMUM
#6 AWG MINIMUM

INCREASE WIRE GAUGE AS APPROPRIATE TO CABLE/WIRE/CONDUIT ROUTING ACCORDING TO LOCAL CODE AND RUN LENGTH

NOTE: From Junction Boxes - use appropriate wire/conduit for AC and DC runs.

Mount Junction Boxes below array 0.6m to 1.8m from center point

Power-Spar PS-35 array

168 CELLS 2.75 VDC/CELL 2 STRINGS
14 A NOMINAL/STRING 230 VDC
NOMINAL/STRING PER RFP-20 ARRAY
Voc @ -20C 278VDC

Power-Spar PS-35 array

21 CELLS @ 2.75 VDC/CELL
NOM. x 8

14 A NOMINAL/STRING 230 VDC
NOMINAL/STRING PER RFP-20 ARRAY
Voc @ -20C 278VDC

Power-Spar PS-140 array

672 CELLS 2.75 VDC/CELL
14 A NOMINAL/STRING 460 VDC
NOMINAL/STRING PER RFP-40 ARRAY
Voc @ -20C 555VDC

THE DRAWING IS THE PROPERTY OF MENOVA ENGINEERING INC. AND IS NOT TO BE REPRODUCED OR TRANSMITTED IN ANY FORM OR BY ANY MEANS, ELECTRONIC OR MECHANICAL, INCLUDING PHOTOCOPYING, RECORDING, OR BY ANY INFORMATION STORAGE AND RETRIEVAL SYSTEM, WITHOUT THE WRITTEN CONSENT OF MENOVA ENGINEERING INC.

Sample only. Subject to change.

DESIGNER	DATE	SCALE	SHEET	OF
10NOV2008	10NOV2008	1:1	1	1
PROJECT	TITLE	SIZE		
DC TO AC POWER DIST.	DC TO AC POWER DIST.	B	RFP-70050	
SEE BOM	SEE BOM	NTS		

Menova ENERGY INC.